



## Building and modernizing your fleet? NFI Connect™ is ready for you.

### Features.

**NFI Connect™ is an exclusive, advanced telematics solution that gives you real-time oversight of your entire fleet, improving bus uptime and safety, and lowering costs.**



#### Built-in Smart Technology

Our on-board technology communicates real-time GPS and analytic data to ensure optimal bus performance and safety.



#### Powerful Management Tool

NFI Connect™ monitors all critical vehicle on-board systems and data, while recording GPS location for real-time monitoring and two-way communication with buses.



#### Fully Customizable

Data reports are only important when the information they contain matters to you. We can adapt them to meet your specific goals and needs.



#### Remote Access + Real-Time Alerts

No matter your location or device, the entire suite of information is accessible - with real-time event notifications sent as issues arise.



#### Constant Collaboration

Our Active Centre Support team monitors your fleet and regularly sends interactive reports about the overall performance of your fleet.



#### Breakdown Prevention

Knowing about a problem before it becomes a breakdown is key to successful fleet management.

### What's new.

**NFI Connect™ is better than ever – newly enhanced, easy to use, and now works with nearly any vehicle in your fleet.**

Now available on all NFI vehicles from New Flyer, Alexander Dennis, ARBOC and MCI.

Enhanced geographically triggered features such as zero- and low-emission zones, and automatic riding height adjustments.

Expanded memory and data capacity for enhanced reporting and troubleshooting capabilities.

Stronger cellular performance compatible with both 4G and 5G cellular networks.

# Why NFI Connect™?

NFI Connect™ Analytics can be retrieved 24/7 via a laptop or mobile device.

## Flexible Deployment

Easy to deploy, compatible with multiple vehicle platforms and requires minimal IT infrastructure.

## Secure

Protected and monitored by state-of-the-art cyber security technology.

## Mobile Access

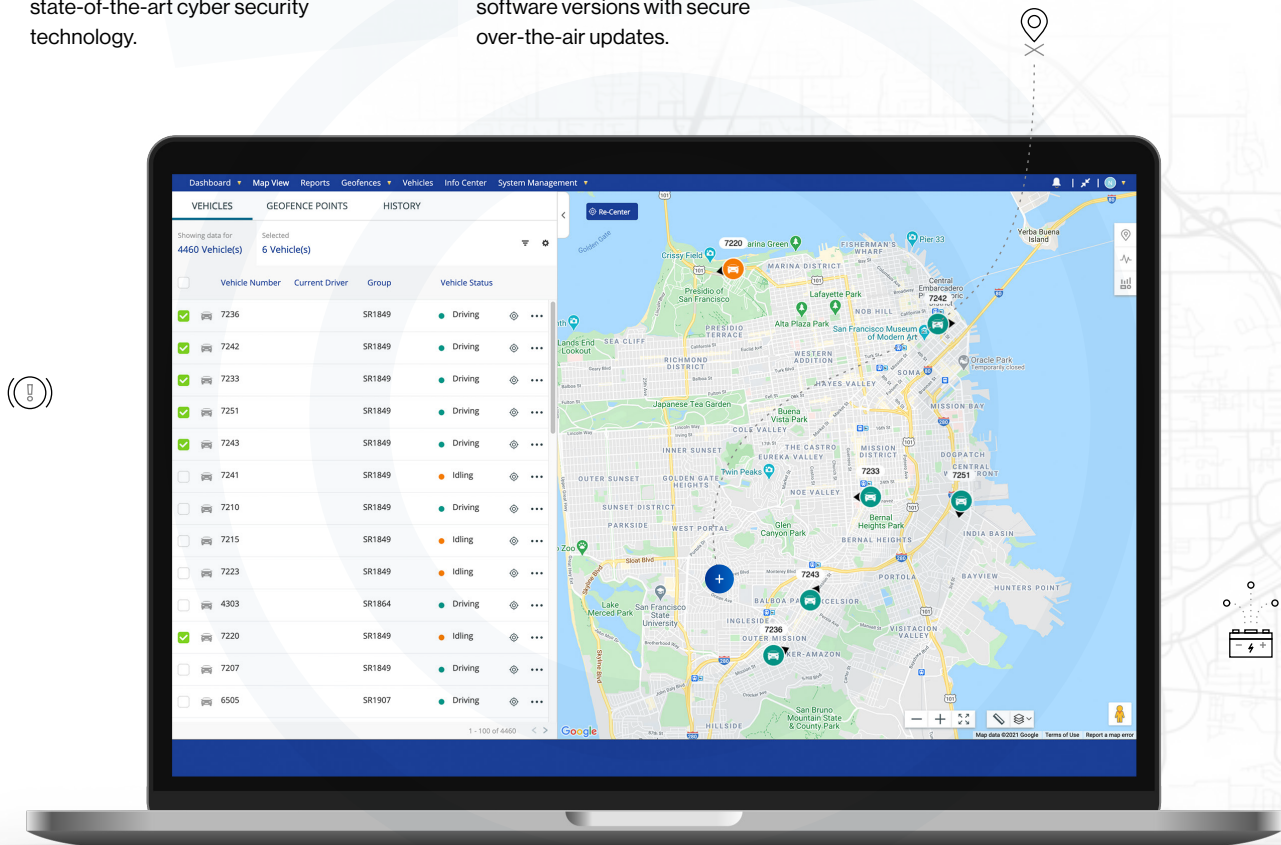
Fleet information at your fingertips with the easy-to-use mobile application for iOS and Android.

## Stronger Performance

Improve your training strategies with insightful reports that show opportunities for improved driver performance.

## Always Up to Date

Each vehicle has the latest software versions with secure over-the-air updates.



## Saves Fuel

NFI Connect™ finds fuel savings and energy efficiencies by identifying smart routes.



## Solves Problems

Our built-in on-board smart technology communicates real-time GPS and analytic data to ensure optimal bus performance and safety.



## Saves Time

NFI Connect™ gives you smarter oversight of your whole operation, ultimately improving bus uptime.

# CONNECT 360

**Connect 360<sup>®</sup>, powered by NFI Connect<sup>™</sup>, is available on every NFI zero-emission vehicle and tracks battery-electric bus and coach performance using secure technology.**

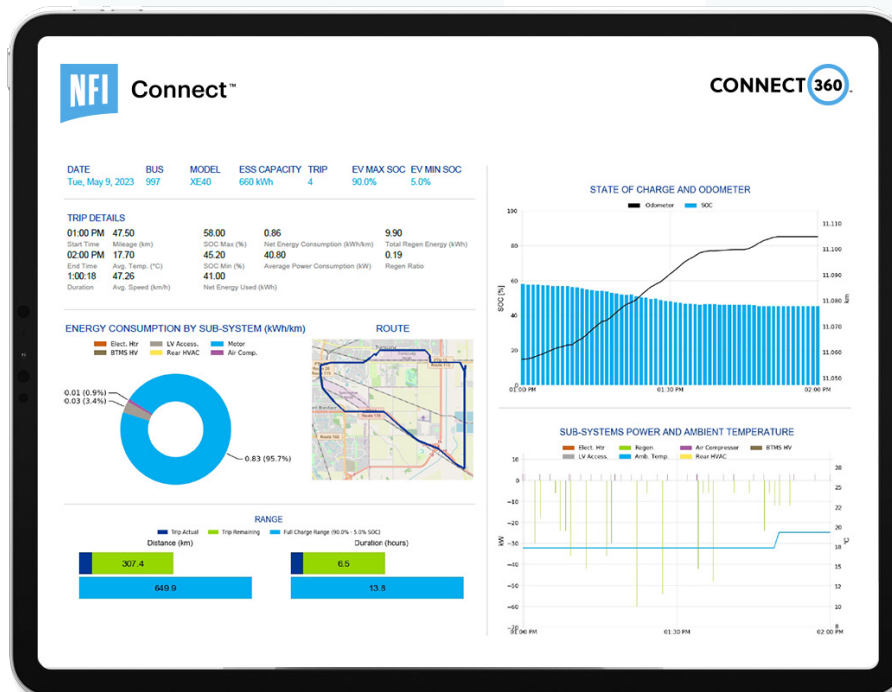
Connect 360<sup>®</sup> is a customizable performance dashboard that provides smart analytic reporting to expand insight and intelligence for managing your zero-emission buses and coaches.

It provides an easy-to-read visual report for battery-electric bus and operator performance, allowing you to better understand this new technology to maximize efficiency, reliability and sustainability, and seamlessly transition to a high-performing zero-emission fleet.

## Key analytics.

Real-time performance statistics are displayed in easy-to-read graphs and measurements. This helps you optimize your zero-emission bus and coach fleet – from drivers and passengers, to maintenance and scheduling teams.

- ✓ Battery state-of-charge
- ✓ GPS location and average speeds
- ✓ HVAC energy consumption per mile
- ✓ Regenerative braking
- ✓ Range achieved and remaining
- ✓ Energy consumption (kWh/mile)



Regenerative braking



Range estimation values



HVAC consumption/mile

## Benefits.



**Additional range capability** with improved driver performance.



Decision-making information to **optimize charging strategies**.



Intelligence on how to **preserve battery energy** throughout the day.



**Reduced operating cost** and maximum fleet utilization.

## VIC | VEHICLE INNOVATION CENTER

Key analytics for Connect 360<sup>®</sup> were developed through the Vehicle Innovation Center, North America's first innovation lab dedicated to the exploration and advancement of bus and coach technology. To date, Connect 360<sup>®</sup> remains the only reporting technology of its kind for battery-electric buses and coaches in North America.

## About NFI.

Leveraging 450 years of combined experience, NFI is leading the electrification of mass mobility around the world. With zero-emission buses and coaches, infrastructure, and technology, NFI meets today's urban demands for scalable smart mobility solutions. Together, NFI is enabling more livable cities through connected, clean, and sustainable transportation.

[nfigroup.com](https://nfigroup.com)



Smart buses for smart cities.

